



# Welcome to the RUSU AGM

- Please keep your microphones muted while presenters are speaking.
- Documents for today's meeting are available at [www.rusu.rmit.edu.au/agm2021](http://www.rusu.rmit.edu.au/agm2021)



# Acknowledgement of Country

RMIT University Student Union acknowledges the people of the Woi wurrung and Boon wurrung language groups of the eastern Kulin Nations on whose unceded lands we conduct the business of the University. RMIT University respectfully acknowledges their Ancestors and Elders, past and present.

# AGM Process



**AGM CHAIR**  
Jarred Armitage



**AGM PRESENTER**  
Akshay Jose

- Microphones on mute
- Comments and questions in the chat please.
- Main purpose of today is:
  - Approval of 2020 Financial Report
  - Reporting on RUSU's activities – RUSU 2020 Annual Report
- [www.rusu.rmit.edu.au/agm2021](http://www.rusu.rmit.edu.au/agm2021)

# Audited Report



# Financial Snapshot

## Finance Summary 2020

Total Revenue in 2020:	\$4,494,571
Total Expenses in 2020:	\$4,284,270
Surplus:	\$210,301
Other comprehensive income for the year:*	(\$73,535)
<b>Total comprehensive income/(loss):</b>	<b>\$136,766</b>

\* This figure represents the (Loss)/gain on the revaluation of financial assets at fair value through other comprehensive income.

The financial audit for financial year 1 January to 31 December 2020 was conducted by **independent auditors BDO** and will be presented at the Annual General Meeting on 19 August 2021.

## RUSU Funding & Income 2020

RUSU funding from RMIT for 2020 is made up of the following:

Base grant	\$3,002,235
SSAF Committee Grants	\$962,500
<b>2020 TOTAL GRANT</b>	<b>\$3,964,735</b>

**2020 REVISED TOTAL SSAF FUNDING 2020 - \$3,964,735**

Additional sources of RUSU income include: investment income, 2020 financial memberships, Realfoods Cafe income and event ticket sales.



# Motion

That this Annual General Meeting of the RMIT University  
Student Union accepts the audited financial report for 2020 of  
the RMIT University Student Union.

# Annual Report



# RUSU Highlights

**23,000+**  
free meals for students...

11,190 Realfoods meals &  
12,370 RUSU breakfast packs  
provided to students living in student  
accommodation during lockdown

**\$30 Compass grocery vouchers**  
provided to students in  
immediate need.

**\$100,000**  
worth of grocery vouchers  
supported almost 2,000 students.

**3,500+**  
students

reached by Compass wellbeing  
events including: Calm Zone,  
Stress Less, R U Okay Day?

**750**  
fresh grocery  
meal boxes

to students through our  
Compass Virtual Marketplace  
and RUSU Healthy Breakfast  
Boxes initiatives.

**600** \$30 UberEats  
vouchers

to HDR, Postgraduate and International  
students and their families, through the  
RUSU Eats initiative

**2,200+**  
students supported

by Compass with mental health advice  
and referral to support services

**94** student clubs  
affiliated to RUSU,  
including 8 new clubs

**3,527**  
RUSU financial  
members in 2020

**6** RUSU  
Orientation  
Special Events

**59**  
RUSU Club  
Orientation  
Events funded

**1,984** students  
responded

RUSU trained volunteers  
provided a student voice on

**56**

RMIT committee hearings

RUSU clubs staff  
supported

**80**

clubs to hold their  
AGMs and IGMs  
(mostly online)

RUSU Clubs  
received **\$97,500**  
in SSAF funded grants

International  
Student  
Facebook  
community

**446**  
Members

**RUSU Events** and our many departments delivered a range of  
online events during lockdown: movie nights, online  
Trivia, workshops, awards nights, games nights,  
online dinners, home deliveries and more.

RUSU Student  
Rights Officers  
resolved close to

**900**  
student  
rights  
cases

RUSU Student  
Liaison Team  
triaged  
student rights  
enquiries from  
**1012**  
students

Uni  
Frequency  
Radio Show  
on SYN FM

**Catalyst**  
back  
issues  
digitised

**197** students  
inducted as RUSU  
volunteers

**107** students  
received training such  
as Food Safety & RSA

**10** online  
volunteer events  
helped keep our  
volunteer community  
together during  
lockdown

**488**  
RMITV active  
members

RMITV pivoted to  
remote productions  
including the Isolation  
film festival, Offbeat  
and The Leak.



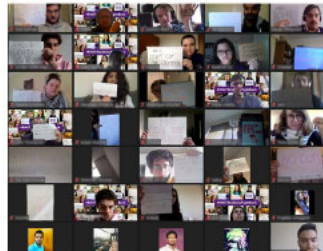
# RUSU 2020 Campaign Highlights



RUSU SAYS NO TO LIBRARY CUTS



HAVE YOUR SAY DAY 2020 – ALL YOUR IDEAS & WHAT NEXT?



TOWN HALL - RMIT STUDENTS SAY NO TO UNI CUTS!



FEE REDUCTION



FREE TRAMS



2020 PRIORITIES



NO FAILS ON TRANSCRIPTS



FINANCIAL SUPPORT FOR STUDENTS



COVID-19 SURVEY SNAPSHOT



FAIR ASSESSMENT



FREEDOM FROM DISCRIMINATION



CENSUS DATE

# RUSU Incorporation

- RUSU is proposing to become a legally incorporated association.
- This will make RUSU stronger and better able to work for our members and clubs.
- RUSU has rewritten our constitution with advice from Slater & Gordon lawyers so we can incorporate and operate in accordance with the legal requirements of an incorporated association.
- Incorporation and the new constitution will make RUSU more transparent and accountable than ever.

# RUSU Special General Meeting

A motion to legally incorporate and accept the new proposed constitution will be put to a RUSU Special General Meeting

Student General Meeting Dates:  
Tuesday 7 September

All Students are welcome and encouraged to attend

<https://www.rusu.rmit.edu.au/constitution>

# Additional Agenda Item

- RUSU received an additional agenda item for today's meeting from a member of the SUC.
- Notice of the motion: <https://www.rusu.rmit.edu.au/agm2021>

**Proposed Agenda Item: Affirming RUSU's Democratic Values**

**Motion:** That the AGM approves putting the additional item, Affirming RUSU's Democratic Values, onto today's agenda.





# Announcement of Prizes



Thank you for your  
attendance