

# RUSU

RMIT UNIVERSITY STUDENT UNION

**HAVE YOUR SAY**

ANNUAL ELECTIONS

# 2018

# Polling Booth Times and Locations

Polling booths will be located at the following dates, locations and times:

	Monday 3 Sept	Tuesday 4 Sept	Wednesday 5 Sept	Thursday 6 Sept	Friday 7 Sept
<b>CITY</b>					
Innovative Design Showcase; 12.4.108	10.30am–3.00pm 4.00pm–7.30pm	9.30am–3.00pm 4.00pm–7.30pm	9.30am–5.00pm	10.30am–3.00pm 4.00pm–7.30pm	9.30am–2.00pm
Swanston Academic Building; 80.3.217	10.30am–3.00pm 4.00pm–7.30pm		9.30am–2.00pm	4.00pm–7.30pm	
Emily McPherson Building; 13.2.24		4.00pm–7.30pm			
Alumni Courtyard				11.30am–2.30pm (During RUSU Chill N Grill)	
<b>CARLTON</b>					
Building 57 Cafeteria; 57.4.202	11.00am–2.00pm	9.30am–3.00pm			
<b>BRUNSWICK</b>					
Building 514 Foyer; 514.1.201		11.00am–2.00pm	11.00am–2.00pm		
<b>BUNDOORA WEST</b>					
Building 210 Entry; 210.2.201			11.00am–2.00pm	9.30am–11.00am	
<b>BUNDOORA EAST</b>					
Building 254 Lounge; 254.1.203	11.00am–2.00pm			12.00pm–3.00pm	

# Annual Elections 2018

The RMIT University Student Union (RUSU) provides all RMIT students with events, representation and support. RUSU is the only 100% independent body at RMIT and is governed by 25 elected student representatives that comprise the Student Union Council – RUSU is run FOR students BY students. We are here to ensure every student's university experience extends beyond lectures and assignments. Every week RUSU's purple colours are out and about with free food and fun. RUSU has over 80 clubs and societies that students can join – clubs may be political, spiritual, academic, cultural and social. While RUSU is the heart of student life, RUSU is also here for students when they need help - we have an extensive student advocacy service, information counters, offer a welfare drop-in centre and keep safe spaces on campuses.

**About the Elections:** Voting at these elections will be by the optional preferential and optional proportional representation methods. Optional proportional representation will be the method of counting for those positions where more than one candidate is to be elected. If you want to vote, you don't have to vote for every position – just the ones' you're interested in. You also don't need to vote for every candidate. For each position you want to vote on, give a "1" to the candidate you prefer, a "2" to your second choice if you have one and keep going as far as you like. General Representatives and NUS delegates are proportionally elected (like the Senate), while all other positions have a single winner.

**The Returning Officer is John Milburn–Clark.**

# Policies



## Left Voice

**Left Voice is a team of independent left wing activists dedicated to fighting for student's rights and social justice issues all year round!**

Student unions should be on the front lines of activism leading progressive campaigns, their project should be one of opposing racism and injustice, fighting for environmental justice and fighting to advance students' rights.

Education continues to be seen as a source of profits by Labor and Liberal governments, and continues to be attacked, the most recent example of this was the lowering of the HECS repayment threshold. This trend will continue unless our unions become fighting bodies. We need student unions that will fight these education cuts and will campaign for free education for every students, both domestic and international.

For years our candidates have organised crucial campaigns to further students rights. We led campaigns against the Liberal government's attempts to privatise education, we helped organise the YES campaign on campus last year, and recently we organised an anti racist campaign in solidarity with the African community against the racist hysteria the government is pursuing.

Above all we are committed to fighting for what is best for students. We know that students have to deal with a range of issues beyond what happens on campus. RUSU should organise campaigns against racism, sexism, and homophobia. RUSU should campaign for environmental justice and divestment!

For an activist student union, Vote Left Voice!



## Connect

**Connect is a diverse team of passionate students, ready to deliver an action-packed, quality year of support and services to the RMIT community.**

This year, we've put together a team of new and old, fresh and experienced students. Many of our team have been program representatives, RUSU volunteers, or leaders in clubs and societies. These students are now ready to take it to the next level and be your voice at RUSU.

Connect delivers results. Connect candidates have fought and achieved significant changes to academic policy. Connect has worked tirelessly to improve mental health support on campus. Connect implemented sanitary vending machines and portable charging stations.

Connect pioneered Bystander Training for club executives to improve campus culture around sexual assault. Connect delivered RUSH Week for its second year, with over 200 students competing. Connect began the Student Life Awards, awarding \$10,000 for students' extra-curricular achievements. Connect continues to improve RMIT student life, lobbying for a RUSU 'After Dark' bar and activity space.

Connect has provided more healthy food on campus, including edible community gardens, and maintained a Compass Cupboard with food for students in need. Connect worked to continue the Compass Drop-In Centre, and organised weekly BBQs, bigger and better than ever.

In 2019, Connect is ready to do it again. With a fantastic team lined up, full of ideas and passionate about improving university life, you can't go wrong with Connect.

Connect offers the accountable, active representation that the students of RMIT deserve.




---

## Belong

**Belong thrives on inclusiveness and diversity. We are a group of like-minded students, who want to improve our student union.**

We have substantial experience on campus from being RUSU office bearers, running clubs and societies and being leaders of the amazing communities that we have on campus.

Belong is running as a new team this year. We believe that RUSU can improve substantially and Belong can deliver that improvement.

Our priority is to support you. We want to ensure; all students feel like they belong in our campuses. All students should have an inclusive space that fosters understanding and appreciation of cultural differences that can contribute to everyone's wellbeing.

Belong believes RUSU is running great social enterprises like Realfoods. Belong will like to increase and improve activities alike, which will offer all the students the opportunity to increase skills and employability.

There are opportunities for students to get involve with industry, get mentoring, support and experience. Belong wants to ensure, students will have access to such opportunities and leave university with the skills we need for the jobs we want. Belong will like to address concerns on environmental issues within our community. We need to work together to achieve change.

Belong understands RMIT's diverse community. We acknowledged home students have different issues to international students. We aim to promote cultural exchange and cultural intelligence with all the students.

We will run campaigns on important issues, such as fairer academic policies and more student support.

Let's collaborate to achieve these goals.

# Statements

## General Secretary

### SHARMA, Aditya (Connect)



I believe a strong student union needs proper financial management. Student money should be handled responsibly, spent efficiently, and

reported transparently. I will deliver an accountable and efficient RUSU in 2019.

It's not all about money though. The role of General Secretary is responsible for convening meetings, developing processes, and ensuring the smooth execution of RUSU's day to day operations.

If elected, I will work hard to ensure your student union is operating as efficiently and effectively as possible, so that you can continue to enjoy great programs like the free weekly BBQs, RUSU parties and well-funded Clubs & Societies.

I worked hard for students this year in the Welfare Department, continuing our Compass Marketplace initiative to educate students about cheap and healthy food, and working with RMIT on the Mental Wellbeing Advisory Committee and Equitable Learning Services. I will continue working hard as your General Secretary to deliver an active and accountable RUSU in 2019.

VOTE 1 CONNECT!

### HERNANDEZ SALAZAR, Sandra (Belong)



I am prepare to provide an efficient, effective and ethical financial strategy. I believe that a well-planned financial process can achieve RUSU's objectives and ensure transparency in reporting.

I have the ability for critical appraisal, I have extensive strategic planning experience and I am very resourceful when it comes to bring funds into the organization. These will ensure RUSU will be able to extend its activities which will benefit all students.

Since I began my studies at RMIT, I have been actively involved in student's welfare. I have been a student representative for 2 years, I am a

co-founder of a student association and I have financial and managerial experience in well know companies.

I will like to ensure that, in the role of General Secretary, I will deliver transparent and clear information to all our members. We stand by Belong and how can you belong if you do not know what is happening. It is our way to make you part of our team and our decisions, we want you to have a voice with us.

Belong wants to create opportunities to all council members to express their views and contribute with their experiences.

We will also like to collaborate with RUSU staff, to improve satisfaction, retention and student outcomes. The best way to achieve our goals is by working together proactively and efficiently.

If elected, Belong will continue working towards students' welfare, student life balance, create and take advantage of opportunities provided by RMIT and industry members to all RMIT students.

Vote [1] BELONG

## Education Officer

### KUMAR, Ameet (Belong)



Education level in RMIT University is highly recognized and BELONG would ensure quality in all the programs is maintained. As an Education officer,

I would ensure students receive work integrated courses, support with English language and assignment writing. We aim to ensure interactive course delivery, having regular face-to face sessions and addressing language issue witnessed by International students. The team looks forward to promote collective study sessions and collaborate with Victoria wide Universities for improved educational experience.

Vote [1] BELONG

### XIA, Lily (Connect)



Education is the core reason you are at university, so it's really important you have a strong representative that will fight and advocate for the quality and accessibility of your education.

Having been Education Officer this past year, I built on the department's existing initiatives to expand the SSCC Summits for student leader skills development, and organised Student Talks, a series highlighting RMIT student achievements. We have worked with the university's Equitable Learning Services, Academic Registrars Group, the heads of each College and the Education Portfolio to make a suite of improvements. We also advocated for the change to the Canvas learning management system implemented in Semester One.

It is in this tradition of advocacy that I will continue in 2019. Students deserve a union that knows how to affect change at RMIT, so that your experience at university is a fairer and more enjoyable one. I will continue my work by holding Student Talks semesterly, initiating peer-to-peer language exchange sessions, and Sit and Write RUSU Study Sessions.

I have the experience and zeal to be an effective advocate for you in 2019. I know how it's done, and I'm ready to do it.

VOTE 1 CONNECT!

## Welfare Officer

### ESMAIL, Haroon (Belong)



Happiness and well-being are Belong's one of the most important precedence. When students start a new chapter into their university studies,

they face a lot of challenges and difficulties along the way. This can be avoided by providing different services to the students. I will ensure that by being elected as the welfare officer I will provide different workshops for students who need help with different problems and, provide adequate



amounts of counseling. We will ensure that there is a welfare rep present to assist the students whenever required.

There would be increased serves of free and healthy breakfast for the students in every campus. More English language workshops would be held to help the students to develop and improve their English skills. Belong would ensure that yoga classes and meditation sessions would be held during SWOT week to keep the students calm.

All I want as a welfare officer is to be able to make sure that everyone gets the best treatment they deserve and that they know there are people like us out there who are willing to face any struggles just to see smiles around the campus. Belong will look forward to be the voice for all your needs.

Vote [1] BELONG

#### ARMITAGE, Jarred (Connect)



The welfare and wellbeing of RMIT students is one of RUSU's top priorities and an enormous part of our job at the union.

This year, we have delivered even more free breakfasts so that students can enjoy free, healthy food on every campus before they go to class. We have delivered free English Language Workshops for students to improve their language and engage with campus life. We have advocated for the SafeZone app to keep you safe on campus. We've also maintained the Compass Cupboard, providing free food for students who need it the most, and introduced the Compass Marketplace to educate students about healthy food on a student budget.

CONNECT has expanded Compass mental health services to the Brunswick and Bundoora campuses, and ensured mental health services and self-care information is presented during the first week of courses. We have collaborated with the University on their major mental health project and video series, and co-facilitated R U OK Day with the RMIT Wellbeing Team. We've also introduced Chill Out Zones and Plush Petting Zoos to support student mental wellbeing during SWOTVAC and exams.

Looking after your health is essential for your success at university. As Welfare Officer, I will work collaboratively with

the university to advocate for more accessible counselling and online mental health support. I also want to continue to bring you great activities and workshops, and continue to make RMIT the gold standard for mental health in Australian universities.

I look forward to taking care of your welfare in 2019, but in order to do that I need you to... VOTE 1 CONNECT!

### International Officer

#### LOOMBA, Suraj (Belong)



The diversity in the university has steadily increased over the years and international students have become an integral part of RMIT.

It is hence imperative that students from all the countries feel included and engaged in the university. As your International Officer, I will try my best to generate this inclusion and involvement for all students. More cultural events for international students to promote their own cultures and learn about different cultures from other students. We will work on organization of collaborative events for students from different nations to practically work and interact with individuals from diverse backgrounds.

Additionally, Belong would also like to celebrate an International Week once a semester where international events from different nations will be held to make all the international students feel like home. I sincerely believe that international student inclusion will give every RMITian a holistic growth and developmental experience.

Vote [1] BELONG

### Postgraduate Officer

#### SUNKARA, Sai Arun Kiran Karthik (Belong)



RMIT is a global university with its students coming from different corners of the world. There are approximately 10,000 students who are doing

their postgraduate studies at RMIT University. We would be supporting each & every one of them in the following during their period of studies at the university like Help them in achieving their academic pursuits, Support for their student rights as Postgrad Students, Run various activities such as workshops, seminars, social events and industry expert talks which would help the Postgrad Students, Making sure that all the Postgrad Students are well represented, heard and encouraging them to get involved in the RMIT community and finally organize various social events for postgraduate students to get to know one another and have fun.

Vote [1] BELONG

### Women's Officer

#### CO, Ma Beatrice (Connect)



In its past year, CONNECT has worked very closely through the Women's Department on the Changing the Course campaign, having our

RUSU President featured as a face of the campaign. We consulted with the Centre for Innovative Justice on a new restorative justice process for survivors of sexual assault, and encouraged all RUSU Clubs Executives to partake in Bystander Training to improve the culture around sexual assault on campus.

The Women's Department worked with the RUSU President and RMIT to issue a joint RUSU and RMIT statement on the anniversary of the Australian Human Rights Commission's report on Sexual Assault and Sexual Harassment at Australian Universities. This is an issue we are regularly working with the

# Statements

University to improve upon, to ensure that RMIT is a safe place to study and work.

Going into 2019, I hope to host a large Women In Higher Education Forum, bring back the fortnightly Ladies Night to help women network and support each other in their studies, and work further with RMIT to respond to the results of the AHRC Survey.

I am really passionate about women's representation and I have so many new and exciting ideas that I can't wait to bring to the department, but in order to do that I need you to...

VOTE 1 CONNECT!

## DEVA, Srishti (Belong)



The women's department is one of the most active departments of RUSU. I will be representing, advocating and celebrating women

identifying students. I will ensure that women identifying students on campus feel safe and included in University life. I will make sure that all women on campus are well represented. I will continue to run women's room in all campuses providing a place to hang out, relax in a safe space for all women, this year I will make sure to make the room more accessible and fun to hang around. I will work hard to raise awareness and run campaigns on celebrating women of Color on campus. I will work with the University to ensure extra resources are provided for the lounges and to ensure RMIT is a safe place. I am extremely passionate about women's representation I have so many exciting event ideas which I can't wait to run. As a candidate from belong and a woman of color I ensure that all the women feel welcome.

Vote [1] BELONG

## Queer Officer

### WARD, Roz & ACREMAN, Natalie (Left Voice)

#### WARD, Roz



With the far right gaining in confidence around the world and mainstream politics in Australia embracing racist, homophobic and transphobic ideas,

there is no better time for progressives on the left to be active. The RMIT queer department needs to be revitalised as a centre for activism that is driven by students for students, and for the world around us. Queer officers should address all forms of homophobia and transphobia that exist on our campuses as well as leading campaigns for social justice in our communities.

As co-founder of Safe Schools Coalition in Australia and a long time LGBTI+ activist I understand the challenges of standing up to the bigots and conservatives who don't want to see queer young people feel included in education. With this role I want to continue that struggle to get rid of all forms of inequality and discrimination and the fight for a better world.

#### ACREMAN, Natalie



The queer department should enable queer students to stand up and fight for equal rights. As an experienced left wing activist, I can do that.

Students should be able to be involved in campaigns against transphobia and homophobia, and for better conditions for queer students on campus. Last year I organised the 'RMIT Students Say YES' campaign group and worked alongside activists within the National Union of Students LGBTI department in the fight for marriage equality. Together we built the biggest movement for LGBTI rights in Australia's history - and we won! Equal rights have never been handed to us, they have always been fought for.

It's important for queer officers to be involved in other progressive social justice campaigns including student rights, welfare, refugee rights and anti-racist campaigns. Not just because these issues disproportionately affect LGBTI people, but also because we

know how important it is to oppose oppression in all its forms.

We need activist queer officers and an activist student union to stand up for LGBTI rights and fight for students.

### SEE KEE, Adam & FROST, Caitlin (Connect)



The Queer Department is one of the most active RUSU departments, representing, advocating and celebrating queer-identifying students. We ensure that queer-identifying students on campus feel safe and included in university life. In 2019, we will ensure that this continues to be the case.



We continue to run Queer Rooms at the city, Brunswick and Bundoora, providing a place to relax, study, or hang out for queer students. We have also moved the city Queer Lounge to a safer space on campus, responding to the needs of queer students on campus.

This year, we have worked hard to raise awareness about the discrimination faced by queer-identifying students. The Queer Department participated in the International Day Against Homophobia and Transphobia, providing free food and activities as well as a platform for queer-identifying students to speak out about the issues they face on campus.

Following the outpour of support for the queer community in response to the marriage equality plebiscite, we have worked hard to maintain momentum in our own queer community at RMIT. We hope to ensure that queer issues are still at the forefront of people's minds, and that we work to make RMIT an increasingly safe space for all students.

We want to work even harder in 2019. We will ensure the continuation and expansion of services for queer students on campus, and continue to celebrate all students regardless of how they identify.

VOTE 1 CONNECT!



## Indigenous Officer

### TOBY, Allison (Connect)



The Indigenous officer is a role where responsibility and honour come into play. It is a role that requires an experienced and strong hearted person

from the First Nation people of Australia.

I, Allison Toby, am a proud Indigenous woman and I hope to achieve changes through RUSU for the Aboriginal and Torres Strait Islander students that study with RMIT University. In this role, I hope to strength the connection between RUSU and the Ngarara Willim Centre, improve support networks, continue to create cultural events and be a voice for the Indigenous students. As the Indigenous Officer, I hope to spark the courage and honour in my fellow Indigenous students and pass on my knowledge and wisdom - even to future Indigenous Officers.

VOTE 1 CONNECT!

## Activities Officer

### GAIT, Sheldon (Connect)



We all know that nothing compares to a RUSU party. In 2019, I will work to ensure that RUSU continues to run fantastic events events such as themed club

nights, pub crawls and booze cruises, to ensure that you get to go out for a night out with friends at an affordable price.

This year, CONNECT delivered our second RUSH Week, a fun week of games and competitions that provided the opportunity for over 200 students to make new friends and get involved with campus life. We hosted numerous large social events including the Winter Wonderland, Rooftop Parties, a boat cruise, pop-up pubs and a Nerd Culture Appreciation Week jam-packed with events. And, in a RUSU first, we collaborated with both Swinburne and VU's Student Union to run a cross-university End of Exams party - our largest yet.

In my past term as a General

Representative I have worked very closely with the Activities Officer to help run great events both on and off-campus. Next year I want to engage RUSU's new After Dark bar space in Building 78 to run regular fortnightly events on campus, including trivia, karaoke and comedy. We also hope to run even more fun on-campus day time events across not just the city but all RMIT campuses! This will include a return of the Uni Fest major cross-campus music festival. I want to engage all parts of the RMIT community in RUSU activities and make the department something that appeals to students from all walks of life.

If you want an exciting year packed full of volunteer opportunities, incredible parties and a ridiculous amount of fun, then make sure you...

VOTE 1 CONNECT!

### DARGAN, Jessica (Belong)



As a representative, I would plan for activities to help students who are introvert to establish network within university and socializing with the

fellow students at this university. I would make sure we have regular parties and events to keep students stress free with positive energy around them. The international events would take place an international week or once in a month for the students belonging to different backgrounds to make them feel like home.

Vote [1] BELONG

## Sustainability Officer

### PINNUCK, Eamonn (Connect)



RMIT is a leading university of technology and design, so we should be a leader in sustainable management, recycling and waste minimisation.

If elected, I will ensure that RMIT is as sustainable an institution as it can be.

It's not all about the university though. In 2017 we re-opened our vegan, organic and fairtrade cafe Realfoods in the NAS Precinct and have since

expanded to offer after-hours catering. We have opened new edible gardens at the City's Alumni Courtyard and at Bundoora West, and we hope to expand these to the Brunswick, Bundoora East and Carlton campuses in 2019.

CONNECT initiated the RUSU Swap Shop clothing bins, where students can donate second hand clothes at RUSU front counters to be redistributed at clothing swap markets. We're also bringing back the RUSU Sustainability Ball for October 2018.

In 2019, CONNECT will be advocating for a fossil free RMIT, as well as bringing food waste bins to our events. We will also be advocating for all food vendors on campus to switch to metal straws.

I look forward to expanding our past initiatives, and moving the department forward so that RUSU can set an example for the university when it comes to sustainable operations. But in order to do that I need you to...

VOTE 1 CONNECT!

### TRIPATHY, Anand (Belong)



RMIT aims to build sustainable infrastructure and provide healthier environment to students for which, I as sustainability officer on

behalf of BELONG will contribute in best possible ways. Creating green spaces and gardens within the

University precinct whilst supporting and promoting organic Real foods café for raw material will be ideal to provide with healthy food for students. It will be our responsibility to re-establish sustainability goals, promote and educate towards recycling food waste in the campus. We in collaboration with Sustainability club will work for creating zero emission campus, making University an example for similar construction and giving chance to students to be an active part of same.

Vote [1] BELONG

# Statements

## Clubs and Societies Officer

**KHANNA, Kapil (Belong)**



Any experience of student life in the university is incomplete without an opportunity to actively engage in programs outside their regular studies. Clubs and societies provide

such platforms, where students can learn and develop crucial skills needed for future employability and where they feel they belong to. I believe clubs and societies can create a vibrant environment for all the students and Belong will ensure that all the resources will be at the disposal of all the students. As the clubs and societies head, I would be looking to streamline the process of listening to student's grievances and getting their demands met within a set time frame. We have a vision of bringing all the existing clubs and societies on a single platform and work on cross club collaboration, where there's a constant exchange of ideas and a healthy cultural and social mingling, for preparing students to work in a country as culturally diverse as Australia. Belong would ensure that club activities are communicated more effectively and would work to empower students to be co-creators of change, working together to make the clubs and societies in RMIT, to be the best. I would be the bridge between students and staff, so they find synergy, and develop partnerships that make for a great academic, cultural and social experience throughout the coming year.

Vote [1] BELONG

**HOOGSTRA, Daniel (Connect)**



University is about more than just study. It's an experience where we make friends, develop skills and create memories that will stay with us long

after graduation. I believe clubs and societies play a large part in making university such a great experience, and I will deliver strong leadership to develop clubs and societies and make your journey through university one to remember.

Clubs are important; they provide opportunities to have fun, get together and gain valuable leadership experience to complement your studies.

This year, CONNECT has continued to ensure that you gain recognition for the work that you do in a club by getting that work recognised on your academic transcript. We have handed out a record amount of clubs funding, including an additional \$10,000 for mid year special events on top of the \$30,000 already distributed. We are proud to now have 112 active clubs and societies, and have over 100 club executives in bystander training to improve campus culture around sexual violence.

CONNECT worked hard to integrate clubs into RUSH week, a week of competitions and activities. This week was a great opportunity for clubs to reach more students and engage existing members.

We have made clubs an essential part of university life by engaging them in orientation events and making sure as many students as possible get the chance to join a club or society.

I will ensure that clubs are easier to engage with, and that they have the funding they need to run events that benefit not just club members, but all RMIT students. We aim to create a Club Council for RUSU clubs to become even more connected than they are, with regular meetings and club mixers, and work with the university on a new suite of combined RUSU and RMIT clubs executive trainings and upskillings.

I want to see more students involved in clubs, so that they can be involved in campus life and make new friends. I will work to increase the facilities, grants and training opportunities available to students so that RUSU clubs can continue to provide amazing opportunities and exciting events to all RMIT students.

VOTE 1 CONNECT!

## Vocational Education Officer

**KHAN, Raees (Belong)**



Vocational Students across the three campuses need more study support and it is imperative to manage the TAFE census

date outreach. As the

vocational Education Officer, I will lobby the University for Consistency in census dates and payment deadlines so that students are not left cancelled while owing money. We will generate specialist advice for students about access to government funding and its limits on enrolment. Belong will also work on the proposal that Point Cook students get a student rights advocate drop in sessions every month.

Vote [1] BELONG

**JAN, Hafizullah (Connect)**



VE students need a strong, experienced representative to remind the university that we are an important part of RMIT and that our rights

matter. I have delivered for you in 2018, and I will deliver for you in 2019.

I have sat as an elected member of Academic Board and Education Innovation and Quality Committee the last two years, making sure VE courses were included in surveys and course improvement programs.

I want VE students to have a great time on campus, and we have taken some great steps towards that in 2018. The VE department has run 'VE Chill' events every fortnight, providing free food to students even when they are attending classes outside the Higher Education calendar. We have run more successful Pop-Up Pub and Move Night events, providing students with free drinks and entertainment without having to leave the Carlton campus.

This year I have worked through boards and committees to make sure VE students are at the heart of university conversations. This includes extending the SLAMs mentorship program to VE students, and ensuring VE students are included in feedback projects and

course improvement programs - course innovation is just as important in vocational education as it is in higher ed.

I have also been putting in the hard yards for VCE students, who are often excluded from campus culture. I have worked to produce RMIT VCE hoodies, to try and develop a sense of belonging and pride, and advocated for VCE students to receive proper graduation ceremonies from their VE programs.

I want to continue this great work and provide more social events for VE students, with monthly lunches for VCE students and a Trade Union Week. VE students need to be heard on university boards and committees, and I have the experience on the Education Innovation and Quality Committee and Academic Board that will let me be a strong voice and advocate for change. It is only with adequate representation that VE students can achieve tangible changes in policy that make campus life easier and less stressful. If improving VE representation and creating a strong social life on campus sounds good to you, then...

VOTE 1 CONNECT!

## Brunswick Coordinator

**SRIVASTAVA, Anshul (Belong)**



The Brunswick Campus is home to the most exciting field of study- Design and Fashion and is located on Sydney Road- the most creatively inspiring and multicultural place in Melbourne.

As the Coordinator I will refresh campus life to resonate an atmosphere which promotes education, motivation, passion, inclusivity and excitement to make it come alive- the way a creative space should be. I passionately care about every student who walks into the Brunswick campus and want to make sure they have the time of their lives at university.

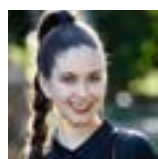
Our aim is not just to enliven student life with events but also with relevant industry presence which will motivate us to do our best and get real time

training on how to crack that job and effectively get the most out of the university experience.

Belong firmly believe that a student union can make the difference between simply studying and having an unforgettable experience of growth, development, making lifelong friends and learning.

Vote [1] BELONG

**BEAUCHAMP, Mia (Connect)**



The Brunswick campus has so much talent to offer and in 2018 CONNECT worked really hard on campus to deliver Brunswick students more exciting

and diverse events such as a Moonlight Cinema, the opening of the Brunswick Activities Space, and even a Brunswick Pub Crawl!

The CONNECT team has maintained both a Women's and a Queer room on the campus, breathing new life into Brunswick and providing heaps of activities, workshops and a friendlier more inclusive environment on campus.

One of the most exciting things CONNECT has continued to deliver for Brunswick this year is maintaining and improving the Compass mental health drop-in centre, making sure students at Brunswick have access to the essential services provided in the city.

I will work to deliver exciting events on and off campus, exhibitions, and workshops that not only reward students but showcase their talent and hard work.

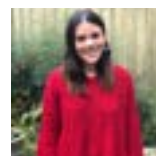
I will continue RUSU's free weekly lunches on campus and work to involve more student clubs to improve campus life in 2019.

I want to build on all the work CONNECT has been doing on campus and see continual improvement to the facilities and services at Brunswick, and with your support we can achieve this. All you need to is...

VOTE 1 CONNECT!

## Bundoora Coordinator

**AGRA, Caitlin (Connect)**



Bundoora is a unique campus that requires unique representation. As your Bundoora Coordinator, I will work to provide for the diverse needs of our diverse

student body.

This year we have worked hard at Bundoora, offering regular access to student rights advice and assistance, weekly events including the free healthy breakfasts, and dedicated support for the campus' student clubs. We have a Compass staff member at Bundoora to provide mental health support and facilitate activities such as yoga and cooking classes at Walert House.

We also ran master classes for postgraduate students, reaching out to a part of the student body that is too often neglected at Bundoora.

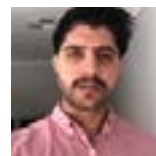
We continued to run the Realfoods cafe in Bundoora West, providing coffee and healthy food for all students on campus. We also opened new spaces at Bundoora, including a games room, and Queer and Women's lounges.

In 2019 I want to continue to improve campus life by providing increased support to student clubs, running more free and fun events on campus, including the return of Bundy Games, and working on improving facilities for students.

Please support me for the position of Bundoora Coordinator so I can work hard for you!

VOTE 1 CONNECT!

**KHAN, Mohammad Waqar (Belong)**



As a Belong candidate, I want to foster a relationship between the students and university, which values and responds to the diversity that is

present in this university. We would also like to provide equal opportunity to the students to participate in their course assessments and have a say in their degree. Promote accountability,



# Statements

educational and management policies and practices to ensure the trust between the students and staff. Belong would like to enhance the student's learning experience through teaching methods, assessments and review provisions. Belong would work to create more learning spaces, around the campus, where students can study. They can be libraries, student lounges classrooms and computer labs. More 24/7-computer labs around the Bundoora campus. Learning Spaces directly impact our ability to learn instead of busy rooms or busy areas. There are more pressing concerns that should hold a student's attention, but we need to build a space to learn and socialize. It's the job of student union to ensure that students get more spaces to interact and socialize in these places around the campus. I would like to build community among the campus, creating more student lounges can do this; game centers and stress- relieve places to relieve students from the stress being built over the semester. Internships at the library so the students can get jobs in their councils in libraries and further their professional career or professional development. More silent study zone around the campus to help students relax and concentrate more on studies. More food options around the campus rather than one place for food. Belong would ensure that Bundoora students studying nursing programs have more help with securing and gaining placements.

Vote [1] BELONG

## City Coordinator

**FLEMMING, Adam (Connect)**



University should be more than just turning up to class and going home. A vibrant campus life is crucial in ensuring the best university experience

possible. I want to make everyone feel at home on campus, and continue to encourage RMIT students to engage in activities and social events.

In 2018 as your City Representative, I have already taken steps towards making the City campus a more vibrant social place. We have further reduced queues at the weekly Chill'n'Grill events,

so you can grab a bite to eat and a quick drink without being late to class. We've continued to make the Chill'n'Grill accessible to the whole student body, offering more diverse culturally themed food weeks, using halal food and providing vegetarian options and soft drink.

Volunteer numbers have increased in our last year, and continuing to provide more volunteering opportunities and jobs on campus will be a key focus as your City Coordinator. I will continue to deliver free food on campus, and lobby the University to do more to make our facilities and classrooms accessible for everyone. You should enjoy your experience at RMIT and I will work hard to make sure every single student gets the most out of their time at university.

I have worked hard as your City Representative this year, and I'll work even harder in 2019. But to do that I need you to...

VOTE 1 CONNECT!

**RATUR, Pawan (Belong)**



City Campus is the biggest campus of RMIT and as the Coordinator it would be my role to make it more functional and useful.

I will ensure RUSU

City Campus is staffed 5 days a week during semester, as well as services in the form of student rights outreach will be provided during the important semester dates. An active grassroots city campus representative collective will be re- established in accordance with RUSU regulations. The advanced infrastructure for the welfare and well-being of the students will be proposed and implemented in the city campus to enhance the effectiveness and productivity of my fellow mates.

I will ensure that Chill N Grill has all the vibes and inclusiveness for all the local and international students, revamp Chill N Grill to include more cultures and conduct events that are diverse in nature. The food and barbeque will be served based on the preference of the students. Volunteers are the backbone of any event organized by RUSU and my role will be to take care of these legends. The volunteers will be mingled with different societies and organizations in Melbourne through seminars and meet-ups that will create

future employability connections and augment their skills for a brighter future.

Vote [1] BELONG

## Brunswick Representative

**DANG, Meher (Belong)**



Belong believes that there should be more focus on student engagement and belongingness. We will bring a change in the current scenario by

involving more and more students in daily activities. Professionally, I want to showcase more fashion work at the Brunswick and City campus- and getting more footfall for those as I believe that all creative students require recognition. We will work for having Pop- Up markets and Yoga Classes, in addition to free meals. I want to assist students with their needs and difficulties as much as I can because I am passionate about making student life a memorable for everyone. Be it grades, academic problems or any other issue that any student is facing, we would work to solve those issues and work hard to make student representation an honest voice of the student body.

Vote [1] BELONG

**CAME, Victoria (Connect)**



I want to ensure that Brunswick is centre stage on the university's agenda. As a campus we pride ourselves on our creativity and artistic spirit. I want to

see this spirit nurtured through great support for exhibitions, showcases and other events which allow us to gain vital practical experience. I will also work to make sure that RUSU increases it's presence on campus and provides services that help to build the Brunswick Campus Community. CONNECT has proven we can do this by bringing the Compass mental health drop-in centre to Brunswick.

By voting for me and CONNECT you are voting for a candidate and team who are committed to creating a vibrant,

artistic and creative community at Brunswick.

VOTE 1 CONNECT!

## Bundoora East Representative

**JAHANI, Mustafa (Connect)**



Over the last few years, the RUSU presence at Bundoora East has increased markedly. The running of regular free food events has given students a new social

hub on the Bundoora campus.

In 2019, I will advocate for more services and facilities at Bundoora East, so that more RMIT services are on offer without having to leave campus.

If elected, I will lobby the university to invest time and money to support the students of this campus; from running more industry seminars, to improving the quality of food and increasing the opening hours of the cafeteria and library. I will ensure support is provided to student clubs on campus, to run events and engage with students outside the classrooms and lecture theatres.

VOTE 1 CONNECT!

**LOH, Lit Feng (Belong)**



Foster a relationship between students and the university will ensure everyone in university grows rapidly and yet should not exclude international

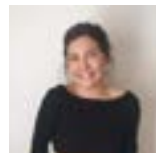
student. As a representative for Bundoora East, home for most of the engineering courses, it's crucial to make a healthy impact for students. During the study in university, students should deserve a better learning space, especially 24/7 computer labs in the East. Not to mention that each of us should have the equal opportunities to participate in assessments and make sure our course delivers the most, including industry connection. As food is the key to connect everyone and international students play specific roles in East campus, therefore, Chill N Grill could bring more diversity to

integrate more international students. A small group of people can become a significant community by doing so. Finally, the industry connection should not be ignored, especially for international students. Belong would work for equal opportunities and rights in term of industry opportunities for students from all the courses.

Vote [1] BELONG

## Bundoora West Representative

**HOPKINS, Chantelle (Connect)**



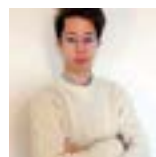
For too long Bundoora has been left behind, forgotten in the outer suburbs. I'm here to change that!

I want to make life on campus the best it

can be, and I will work to improve the promotion of RUSU events and services to students, get more clubs active and involved on campus, and continue to deliver the awesome free weekly events. Vote for myself and CONNECT to ensure you have an active and engaged Student Union for Bundoora.

VOTE 1 CONNECT!

**CAI, Tengyi (Belong)**



As the Bundoora West Representative, I would work to have more student engagement. I would like to run workshops from different streams of

programs, to ensure that there is proper inclusion of all the students, so that they can interact and grow their friendship tree. I would like to help the students with their queries and problems and would also advocate for speakers to come and give motivational talks and talk about the problems faced by them while early in their professional careers. Belong would organize more networking events for the students to widen their professional circle and have a sense of belongingness.

Vote [1] BELONG

## City Representative

**MAKHIJA, Mona (Belong)**



With all due respect of this position and a wish to step in the footsteps of the previous city representative, BELONG would bring a cheerful and healthy

environment within RMIT. Through our dedicated efforts and hard work, we would love to organize better ways to help students settle in and have a great time during their stay with our RMIT Family. We want all students to keep their journey most happening within these important educational years, make connections with students from other nationalities and explore self.

The volunteer programs will give students exposure to gain professional insights and gain their skills in a way to make them job-ready by the time they finish their course.

With all the kindness and our beautiful hearted volunteers in BELONG, we would make sure we have stress reducing sessions on regular basis, dance sessions, sports events and chilling sessions. We aim to provide After everything I as city representative would always be up to lend my ears on what you expect and desire to match it with what I can possibly do.

Vote [1] BELONG

## Five (5) General Representatives

**SHARMA, Shubham (Belong)**



The major issue at RMIT is lack of communication between the concerned authorities and students which lead to the widespread

unawareness and transfer of misleading information within students. If selected as a General Representative, I will ensure you get the required information by setting up a regular information booth and posters around campus. I believe in accountable and fair student representation. My focus will be on engaging students by having regular



# Statements

polls and contests every fortnight on the social media and try resolving their queries. The most important thing is to sign up with an application and setting up a chat-bot to address basic queries of students and if not addressed through chat-bot, transferring them to the upper authorities to ease the staff and promote efficient working of the system.

Ensuring that you have a good student experience at RMIT will always be my number one priority. A vote for me and BELONG is a vote for more welcoming and inclusive community at RMIT. Your vote is vital.

Vote [1] BELONG

## HAWKINS, Lily (Connect)



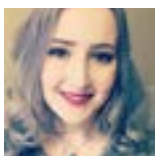
Communication is a massive concern at RMIT. Too often we get emails bombarding us with inappropriate information and not enough of the

essentials. If elected as your General Representative I will ensure you get your information in the format you want. For example, lobbying RMIT for an easy-to-use app.

As a RUSU Casual this year, I have had a fantastic opportunity to engage with the student body and know that I can ensure all students are receiving the best representation they can get. In a communications-related field myself, I believe in fair and accountable student representation and will work hard to make the biggest possible impact for students. My focus will be on supporting the Student Union Council to ensure every aspect of RUSU's operations is as efficient and effective as possible.

VOTE 1 CONNECT!

## GVILDYS, Ella (Connect)



I am incredibly passionate about representation, leadership and most importantly RUSU.

I believe in a student union that represents students from every walk of life.

I've been actively involved in the Student Union for several years. This year I have been the General Secretary

of the Union, represented you on Academic Board, and before that as Activities Officer. During this time I've gained a considerable amount of experience in the day to day operations of the union, supervising RUSU staff members and running departments in order to deliver important student services, campaigns and events.

I care a lot about the functioning of this union, as it is an incredibly important student resource. I want to bring all the passion and important lessons I've learnt and the experience I've gained into 2019, but in order to do that I need you to...

VOTE 1 CONNECT!

## KELSEY, Naomi (Belong)



Belong believes in student welfare and support. As a General Representative I will communicate with all the students to ensure that their passions are

reflected throughout RMIT.

We believe that as RMIT students, we should all have the supportive networks that are required when studying a degree, this can be achieved through inclusivity and accessibility within RMIT. This includes promoting an understanding towards accessibility to students and ensuring that all groups and clubs are as open and inclusive as possible. I believe this is essential to providing a safe and welcoming space for all students.

We have recognized that there should be more connections to industry and job opportunities available through RMIT. As we are giving our time and money to this university, we should be receiving more contact to professionals and workshops in our preferred industry. By providing these connections, students will have a heightened sense of security for future careers as well as creating new relationships.

After dark space run at cost to RUSU's members. Better Support from Business Central with trained RUSU volunteers to assist students with accessing information and course and program managers: (street team NAS) extended

to support for business students.

Vote [1] BELONG

## CHEN, Liyuan (Connect)

As a General Representative I will be uniquely placed to represent RMIT's international

community on the RMIT University Student Union Council and the broader committees within RMIT University.

International students are a large and significant part of the RMIT community and therefore deserve a strong voice within it. I want to make sure that we are not ignored and issues affecting us are recognised and addressed. If elected I will work to make sure that the free English workshops continue to run to ensure that International students are welcomed into university life and taught valuable skills with like-minded people. I want to assist other elected student representatives within the student union to build communities on campus that welcome international students and provide opportunities to meet new people and socialise. A vote for me and CONNECT is a vote for a more welcoming and inclusive RMIT community.

VOTE 1 CONNECT!

(No photo supplied.)

## TAHIR, Umer (Belong)



As your City Coordinator for the past two years, I have delivered a lot to help the students have a productive time.

I have the experience necessary to guide Belong in their duties and ensure that the union will be transparent and efficient. We will ensure that there will be more student engagement and inclusion and that all the students have a good experience at RMIT. We will work to make RMIT a better place to study and ensure that all the students have a feeling of belongingness.

Vote [1] BELONG

## PARRY, Liam (Left Voice)



I've been an activist at RMIT for a couple of years now. I've organised protests against the Liberal's education funding cuts, and supported and promoted campaigns against racism and sexism, and for environmental rights on campus. This semester I've been heavily involved in the campaign to support the African communities of Melbourne against racism. If elected, I will represent left wing students and promote progressive campaigns at RMIT. I want the union to be supportive of campaigns for social justice, like Fossil Free and the Disarm campaigns.

## BAIG, Mirza (Belong)



As general representative I will support all the students and staff on the campus and will co-operate with them whenever there is a need to be.

I will ensure that appropriate prayer spaces taking into consideration all religious and spiritual belief systems are made available to all so that they can pray without any interruption. I will ensure that there is proper engagement and inclusion of students on campus.

Vote [1] BELONG

## HADI, Sadaf (Belong)



RMIT offer us many opportunities, it is a great place to be. I've been a student since 2014. I have the experience, work-ethics, ideas and the

support of Belong to ensure that our time at university will be valuable to our student experience.

For some, University is second home. The need of finding, a space for you, that you Belong and you have the voice to make improvements, should matter to all of us.

I have been a strong advocate of student safety on campus for the past 3 years. All students should feel safe, to feel like they belong on campus. I have been successfully involved in campaigns for fairer assessment policies, more funding for

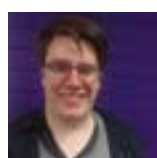
student life and greater support for students. However, there is room for improvement.

My diverse background and great understanding of cultural intelligence have made me realize that an inclusive space that fosters understanding and appreciation of cultural differences that can contribute to thrive academically and encourage us to get involved in the rich campus culture; to belong.

There are several opportunities for us, the students, to get involve with industry, get mentoring, support and experience. I want to work hard on this.

Vote [1] BELONG

## JARVIS, Alexander (Connect)



University should be an enjoyable place for everyone. Students shouldn't have to struggle to get by, financially or socially. For students to achieve their best, they need

to be provided with the best services, resources, and support right from day one.

I believe in fair and transparent student representation and will work hard to make the biggest possible impact for students. I want to make sure that we are not ignored and issues affecting us are recognised and addressed. If elected I will work to make sure that issues such as recorded lectures are enforced.

I want to assist other elected student representatives within the student union to ensure that university is an enjoyable time for students and that they can get the most out of their education. A vote for me and CONNECT is a vote for a more gratifying and enriching university experience.

VOTE 1 CONNECT!

## GIDDINGS, Chris (Left Voice)



It is crucial that student unions take on left wing activist campaigns in order to protect students' rights. Today two out of three

students live below the poverty line and there continue to be constant attacks on education and welfare. Student unions can be a platform for standing up for social

justice and to fight against racism, sexism, and privatisation of essential services. Students do not live in a bubble and it is the duty of unions like RUSU to engage students in left wing struggles to challenge oppression and inequality in all its forms at RMIT.

## KUMAR, Prashanth (Belong)



With all due regard of this position and a desire to get in the strides of the past general representative, BELONG would bring a decent and solid

condition inside RMIT. Through my most committed endeavors and diligent work, I would love to arrange better platforms to approach and encourage students of RMIT in every aspect to settle in and have an incredible time amid their stay with our RMIT Family. In the wake of all that I would do as a general representative, I would preferably be up to listen carefully to what you anticipate that and will coordinate it with what I can do.

My experience as a volunteer at RUSU makes me experienced to accept this opportunity and work with energy to make student life all the more energizing for and encourage student engagements in University.

Vote [1] BELONG

## DOVE, Abena (Connect)



As your President for the past two years, a lot has been delivered.

Myself and the CONNECT team have lobbied the university, and succeeded, in

making academic policy more student friendly, creating a more mental health-friendly campus, and actively participating in the 'Be The Change' campaign, shaping the discussion and culture around sexual assault on campus.

We've implemented countless services for students, like portable charging stations, edible community gardens, and the Compass Drop-In Centre. Our RUSU After Dark bar space will be opening in September 2018, alongside an arcade and games room.

# Statements

In 2019, we can continue this work and make RMIT a better place to study. I have the experience necessary to guide next year's Student Union Council in their duties; I will ensure that RUSU continues to be a transparent, efficient, compassionate and accountable organisation.

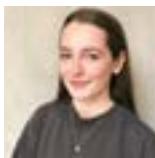
Ensuring that you have an excellent student experience at RMIT has always been my number one priority, and I will ensure that this continues to be the case in 2019.

VOTE 1 CONNECT!

---

## Catalyst Editor(s)

**SMITH, Siri &  
O'BRIEN, Rachel &  
TREWARTHA, Abigail (Connect)**



Catalyst is an essential resource for students at RMIT. We provide students from communications to science to business, the chance to have their voices heard in our pages, podcast and online. Even if students are not directly involved in the production of Catalyst, they still benefit from having access to a great student magazine that helps them stay informed and entertained!



Catalyst needs editors with diverse experience

and a fresh outlook, and that's why Abigail Trewartha, Rachel O'Brien and Siri Smith are running to be Catalyst editors in 2019. Abigail has experience in a communications and management background, Rachel has previously been an editor of a student magazine based in Sydney, and Siri is an accomplished journalism student and Catalyst contributors are excited to represent and inform RMIT students.

As passionate communication students, we believe we have the skills to deliver! With your support, we will create real value in the form of a truly memorable and broad-based magazine for all students to enjoy.

VOTE 1 CONNECT!

**JAIN, Lekhika &  
EL-MAHMOUD, Rana &  
CORK, Emily (Belong)**

**JAIN, Lekhika**



Are you a RMIT student waiting to expose your talent to the world? Catalyst is here at rescue. More networking events to help you meet your

future employers or business partners and internship opportunities within the Catalyst team. Catalyst has access to a huge demographic in the heart of Melbourne. It can do more than just being a student magazine. It holds the power to bring about a positive change. Catalyst is the voice of students. The content of the magazine must focus on real time student issues to generate awareness. A pen is a strong weapon when it comes to bringing about a change. As a Catalyst editor, I will ensure that Catalyst focusses more on student life, their issues, their stories and their work. Issues like unaffordable housing in Australia, employability, discrimination, domestic violence, homesickness are on top of the list. To work for the welfare and wellbeing of RMIT students, will be Catalyst's top priority. This year catalyst will see more involvement of new talents not only creative writers, photographers, journalists, artists, radio producers, filmmakers, advertising wiz's, designers, cat gif experts but also the students who have nothing to do with any of these. If you have a story, Catalyst will be the voice. Catalyst will develop your ideas into a story for you. I will make sure your story is heard. If you possess any talent, Catalyst will provide you with the right platform.

Vote [1] BELONG

**EL-MAHMOUD, Rana**



Catalyst will add a flavor of diversity in the editorial and photojournalism. Will touch base with those who got no highlight or voice, will collaborate

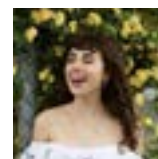
with Australian talents in different fields. Will liaise more with the school, governmental sector and students. Will introduce private sectors within for student jobs & development.

Allow the growth of the magazine and open up a channel of dialogue.

Cooperate with different students, give them the opportunity to develop, share their story & feel home. Use the 23 years of working in journalism, business and media to assist the University magazine with a group of the young and talented team. It's a journey of experiences, challenges and continues success to Catalyst.

Vote [1] BELONG

**CORK, Emily**



Catalyst is so important because it is created by students, for students. This gives us a powerful opportunity to share progressive perspectives that the

mass media tends to gloss over. As a design student, I live and breathe all things visual, and would love to help compile a publication of voices and stories that truly need to be heard.

Vote [1] BELONG

**NECOVSKI, Nathan**

(No photo or statement supplied.)

---

## NUS Delegates – Seven (7) positions

**HOOGSTRA, Daniel (Connect)**



Studying on a meagre wage can be hard, so I want to be sure that all students regardless of socioeconomic background are represented here, and

able to live and study comfortably without barriers. The National Union of Students is the largest group representing students in Australia and the connection between living standards and successful study is clear. I passionately support NUS' current campaign to Raise The Rate of Newstart - this is a national issues that affect students all over Australia. If elected, I will provide a strong voice of advocacy to the National Union of Students. Please vote for me and Connect to give all students the passionate voice we deserve.

VOTE 1 CONNECT!



## SHARMA, Shubham (Belong)



The National Union of Students is an important body that provides students a voice to affect policy change at a National level. Being a part of

Belong I will push for a change, get signatures on petitions, and get things done. I have the tenacity, zeal and work ethic to push for vital changes. If given the chance, I will try my best to work for students and create a perfect stage to hear student's voice.

Vote [1] BELONG

## RATURI, Pawan (Belong)



Studying in Australia can be hard, so I want to assure international students are noticeably represented here. I stand firm with the believe that all students

should be treated equally and there should be the same support and services for international students as local students. Many local policies made by Australian Govt. affect us at RMIT like visas to working restrictions. If elected, Belong will work for a stronger international student voice on the National Union of Students platform and will work passionately towards the rights of our fellow mates.

Vote [1] BELONG

## LOOMBA, Suraj (Belong)



The Nation Union of Students can play a huge role in defending the rights of students and stance up for wider demand in the community. As such,

a NUS delegate should be devoted in standing up for social justice and for the rights of students. As a candidate for Belong, I will ensure political motivation to be involved in building campaigns for the advantage of all of us. I will work towards the advocacy for students on National level.

Vote [1] BELONG

## HADI, Sadaf (Belong)



I am managing the position of delegate to the National Union of Students as I think that RMIT students merit a strong representative voice on a larger stage.

With the Federal Government intending to partly deregulate university fees, it is more important than ever that domestic as well as international students are represented with a motive, passion at the National level. If given chance, I will work to ensure that the voice of RMIT's student cohorts is heard loud and clear. We the part of Belong will insure that we the students of RMIT are heard loud and clear on the national stage.

Vote [1] BELONG

## JANCY BENNY, Athulya (Left Voice)



The National Union of Students is the peak representative body of students in Australia and is committed to ensuring students have access to affordable,

quality education and better living standards, which are all things the Liberal government does not want students to have. It is the organisation that runs the Make Education Free Again campaign and organises the opposition to attacks on higher education.

Over my time at RMIT I have been involved in building and coordinating protests not only against fee deregulation and funding cuts but also key issues such as marriage equality, racism and sexism.

Having as many experienced and committed activists as possible involved in the National Union of Students is key to defending and fighting for our rights. I believe that my experience as a student activist will allow me to represent and fight for the rights and interests of students at the national level.

## MAKHIJA, Mona (Belong)



I am running for the position of delegate to the National Union of Students because I believe that RMIT students deserve a strong representative

voice on the national stage. As the job environment and employability is changing faster than ever before it is more important that both domestic and international students are represented with drive, passion and a firm voice at the national level. The National Union of Students is the ultimate representative body for university students in Australia. If elected to this key representative body I will work to ensure that the voice of RMIT's students is heard and recognized so that a sense of Belonginess is achieved.

Vote [1] BELONG

## SRIVASTAVA, Anshul (Belong)



I believe in supporting the underdog and giving people a fair go. It was to protect the principles of a fair go for students that the National Union of

Students was shaped. The coherence in the vision shared by me and the principles of the National Union of Students has led me to run for election as one of RMIT University's delegates to the National Union of Students. As a delegate from Belong, if elected I will put my utmost efforts to deliver principles of equity and ensure more student engagement at the National Union of Students.

Vote [1] BELONG

## SHARMA, Aditya (Connect)



I am running for the position of delegate to the the National Union of Students because I believe that RMIT students deserve a strong representative

voice on the national stage. With the Federal Government intending to reduce the HECS repayment threshold and university funding, it is more important than ever that both domestic and international students are represented with purpose, passion and a strong voice at the national level. The National Union of Students is the peak representative body for university students in Australia. If elected to this key representative body I will work to ensure that the voice of RMIT's many student cohorts is heard loud and clear. As one of Australia's largest education providers RMIT University should have

# Statements

representation proportionate to our size. Vote for me and I will work to ensure that, we the students of RMIT, are heard loud and clear on the national stage.

VOTE 1 CONNECT!

## ACREMAN, Natalie (Left Voice)



Nation Union of Students officer bearers, elected with the help of activist delegates, have led some of the most important student protests and campaigns

we've seen on campus. This includes the fight to Make Education Free Again run by the Education Officer, the NUS Says Yes to Marriage Equality run by the LGBTI Officers, and the ongoing fight against racism led by the NUS Ethno-Cultural office.

These campaigns can only exist by nominating left-wing activists on a campus level. I'm committed to ensuring that these fights continue next year and beyond and by voting for me as an NUS Delegate, we have the best chance at doing that!

## HAH, Madaleine (Left Voice)



The National Union of Students works best when it is a fighting, activist body, standing up for students. This is when it is most effective, as seen

with the campaign against fee deregulation in 2014. Fee deregulation was stopped because of campaigners and activists. Through protests and stunts, it became untenable for the Senate crossbench to support it. As an NUS delegate, I would vote for activists and campaigners. It is only through having a union of activists and campaigners that we can have real power. And when we have power, we can effect change: we can stop the government's attacks on students and young people, and we can also pressure the government to create positive politics for students and young people. NUS also needs to be independent. When the government of the day attacks young people and students - whether it be a Labor government or a Liberal government - NUS needs to fight back. We need a fighting, independent Union of activists, and as an NUS delegate I would vote for such a union.

## PINNUCK, Eamonn (Connect)



As a regional student here at RMIT University I understand how hard it can be living, studying and working in the big smoke, away from home. The Australian

and Victorian governments can do much to help. Living in metropolitan areas is expensive and rural and regional students do not have many of the support networks that local students have. I want to make sure that the issues facing regional students are heard not just at RMIT, but also at a national level. That is why I am running for election to the National Union of Student: to support all rural and regional students. From one farmer to another, please help me to help you.

VOTE 1 CONNECT!

## GIDDINGS, Chris (Left Voice)



The Nation Union of Students can play a massive role in defending the rights of students and stand up for wider demand in the community. As such,

an NUS delegate should be invested in standing up for social justice and for the rights of ordinary people. As a left-wing activist, I have to experience and political motivation to be involved in building campaigns for the benefit of all of us.

## GAIT, Sheldon (Connect)



I believe in supporting the underdog and giving people a fair go. It was to defend the principles of a fair go for students that the National Union

of Students was created. It is this link between my own views and the principles of the National Union of Students that has lead me to run for election as one of RMIT University's delegates to the National Union of Students. RMIT University was founded as a Working Man's College. If elected I will campaign for you to ensure that the principles of equity and a fair go, which RMIT University was founded on, are honoured and maintained at the National Union of Students. Your vote is vital.

VOTE 1 CONNECT!

## PARRY, Liam (Left Voice)



The National Union of Students has an important role to play in Australian politics. It has played a leading role in the fight

against university fee deregulation, and equal marriage, to name just a few. Our national student union can make a difference, but we need a left wing voice in NUS so that the body functions as an active and effective union that campaigns for a better society. I'll work towards a National Union that stands against inequality and bigotry, and for social justice.

## XIA, Lily (Connect)



The relationship between the RMIT University Student Union and the National Union of Students is a vital one. The National Union of Students has

national reach allowing it to represent students' interests when issues affecting students on a national level arise (such as youth and study allowance). This allows RMIT University Student Union to provide an effective response to issues facing students on a national level whilst still leaving the majority of its resources to campaign for students on RMIT campus-specific issues. If elected I will work to strengthen ties between the RMIT University Student Union and the National Union of Students to ensure that RUSU continues to be able to provide effective representation for RMIT students affected by national issues. Your vote is crucial!

VOTE 1 CONNECT!

## JIMENEZ LUDEKENS, Nahui (Left Voice)



The National Union of Students works best when its a fighting body for student rights!

At RMIT I've been involved in organising a wide range of protests against the liberal government's education cuts as well as building anti racist campaigns on campus. This year I organised a group photograph against the vile racism Channel 7 was spewing



and in solidarity with the African community. I think that in the current political climate now more than ever we need people who are willing to stand on the right side of history and fight against injustice.

NUS should be actively fighting against any attack on student welfare and education as well as leading the fight against racism.

As a NUS delegate I will ensure that this body continues to put pressure on the Government and University administration to fight for student rights.

### GIBSON, Jeremy (Left Voice)



The national union of students is a powerful body that can advance the interests of students Australia-wide... but only if it fights for it! The interests of students

have never advanced while peak representative bodies have retreated from a fight. This is why it's essential that there are experienced activists in the NUS who're determined to engage with student demands and mobilize students themselves to fight for them. I have experience in building protests and campaigns around issues such as refugee rights, marriage equality, and anti-racism. As a delegate to the NUS I can be a fighting representative for student's demands and hopefully inspire others to action in the future.

# RUSU

RMIT UNIVERSITY STUDENT UNION

[W RUSU.RMIT.EDU.AU](http://RUSU.RMIT.EDU.AU) [f RUSUPAGE](#) [t RMITSU](#) [i RMITSU](#) [v RUSUONLINE](#)

**HAVE YOUR SAY**